

Statement of Responsibilities

This document is for use by experienced and trained Qualified Cleveland Range, LLC Authorized Service Representatives who are familiar with both the safety procedures, and equipment they service.

Cleveland Range, LLC assumes no liability for any death, injury, equipment damage, or property damage resulting from use of, improper use of, or failure to use the information contained in this document.

Cleveland Range, LLC has made every effort to provide accurate information in this document, but cannot guarantee that this document does not contain unintentional errors and omissions.

The information in this document may be subject to technical and technological changes, revisions, or updates.

Cleveland Range, LLC assumes no liability or responsibility regarding errata, changes, revisions, or updates.

Qualified Cleveland Range, LLC Authorized Service Representatives are obligated to follow industry standard safety procedures, including, but not limited to, OSHA regulations, and disconnect / lock out / tag out procedures for all utilities including steam, and disconnect / lock out / tag out procedures for gas, electric, and steam powered equipment and / or appliances

All utilities (gas, electric, water and steam) should be turned OFF to the equipment and locked out of operation according to OSHA approved practices during any servicing of Cleveland Range equipment

Qualified Cleveland Range, LLC Authorized Service Representatives are obligated to maintain up-to-date knowledge, skills, materials and equipment.

DESCALING PROCEDURE

for

200/300KBTU BOILER BASES

PRELIMINARY PROCEDURE

- 1) Start with the unit turned off & completely cool.
The boiler will drain in approximately 3 minutes.
- 2) Open the door at the base of the unit.
- 3) Remove the handhole plate & gasket. Discard old gasket.
- 4) Inspect the boiler for scale build-up. Remove any loose scale within reach of the handhole plate area.
- 5) Proceed to correct boiler instructions listed below.
- 6) For descale piping parts list, see P/N 107142 Rev "F".

1333 East 179th Street
Cleveland, Ohio 44110

Phone: (216) 481- 4900
Fax: (216) 481- 3782



Part No. 260ALK - F 4/03

GAS BOILER, ORIGINAL VERSION

- 1) For piping setup, see P/N 260ALK Sht 4 of 7.
- 2) Install handhole plate with descaler ports (Item 1) & new gasket (Item 12).
- 3) After descaler handhole plate has been installed, attach the 2.500 inch nipples with attached unions to the inlet & outlet ports.
- 4) Remove cal code switch (p/n 19995) from the boiler base & clean the shaft under the float.
- 5) Connect the 1/2 inch hose with the attached union to the bottom 2.500 inch nipple.
- 6) Connect the 3/4 inch hose with the attached union to the top 2.500 inch nipple.

GAS BOILER, FIELD REPLACEMENT VERSION

- 1) For piping setup, see P/N 260ALK Sht 5 of 7.
- 2) Install handhole plate with new gasket.
- 3) Remove Cal Code plate (p/n 19995) from the boiler base.
- 4) Install plate (Item 18) in place of Cal Code switch for descaling procedure.
- 5) When the boiler is descaling, clean Cal Code switch (p/n 19995, if applicable) once removed. Also, clean the shaft under the float.
- 6) Remove plug from tee & install descale plumbing assembly (Items 2, 3, 4, 5, 14, 15, & 18) on discharge side in male run tee located underneath the safety valve.
- 7) Install descale plumbing assembly (pump side) in Cal Code plate. Connect plumbing assembly to item 19.

GAS BOILER, CURRENT PRODUCTION RELEASE

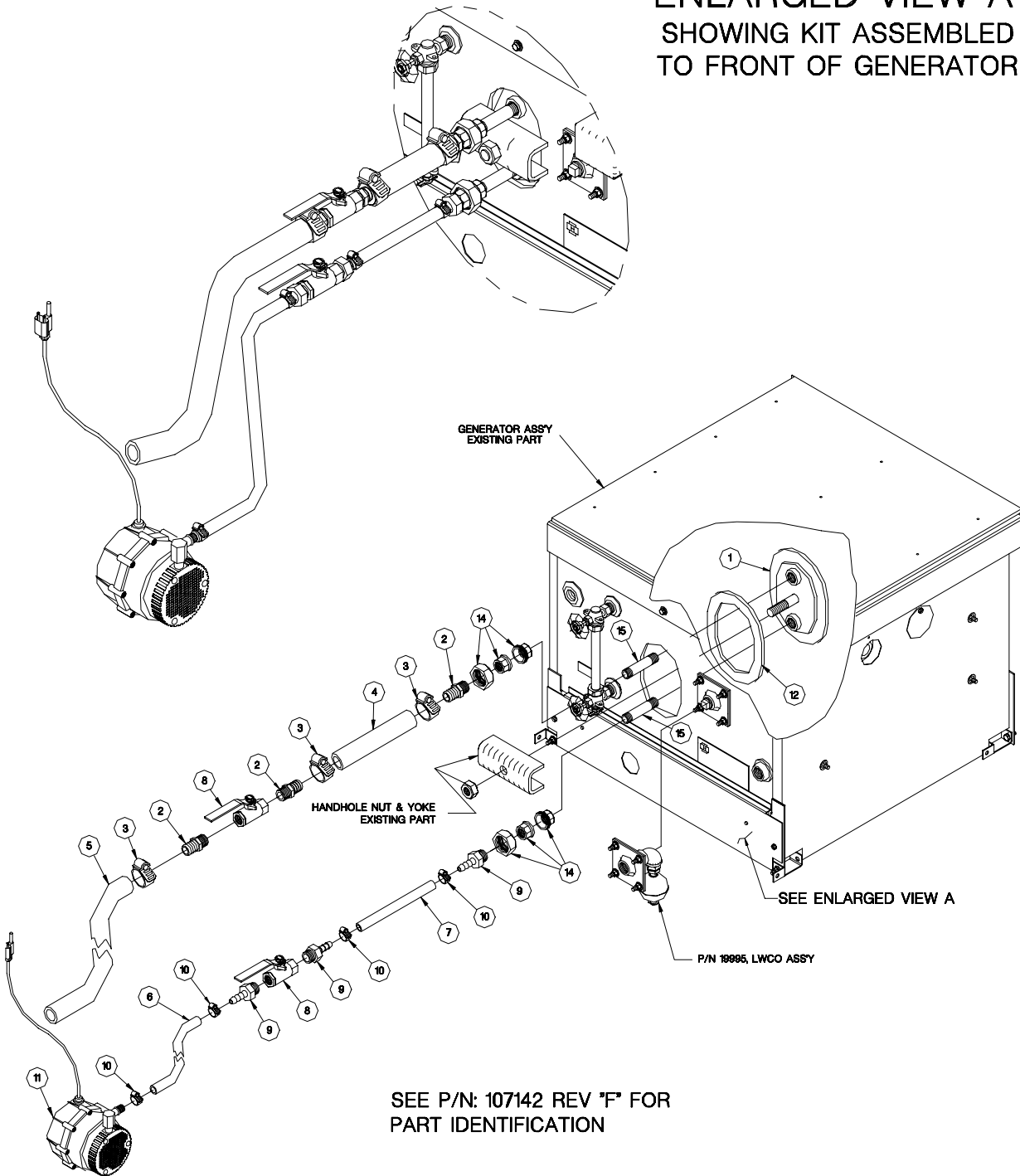
- 1) For piping setup, see P/N 260ALK Sht 6 of 7. Install handhole plate with new gasket.
- 2) Remove plug from LWCO plate (if so equipped) & from the male run tee underneath the safety valve.
- 3) Install descale plumbing assembly (on left side) in male run tee, connected to the safety valve.
- 4) Install descale plumbing assembly (with pump) in drain port.
- 5) If applicable, remove LWCO switch (p/n 19995) from boiler base.
- 6) If applicable when the boiler is descaling, clean LWCO switch (p/n 19995) once removed. Also, clean the shaft under the float.

DESCALING INSTRUCTIONS

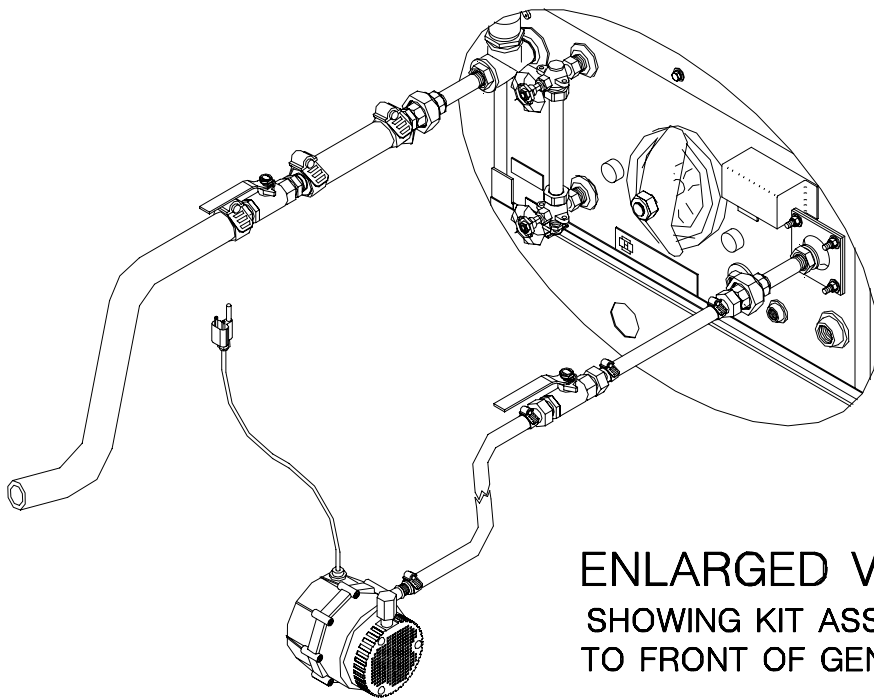
- 1) The manual blowdown drain valve must be closed.
(if so equipped), the manual 3/4 inch ball valve is located at the lower right front of the boiler face.
- 2) The valve handle should be perpendicular to the valve.
- 3) Fill the 5-gallon bucket with 2 gallons of descaler & 3 gallons of water.
- 4) Turn the unit on.
- 5) Turn on the pump for the descaler & open the inlet valve (Item 8) to the boiler. Let the boiler fill with descaler to just above the top of the sight glass. Before opening the exit valve, make sure the exit line is in the bucket with the pump.
Note: The amber light reset switch on the console will turn on.
DO NOT PRESS THIS SWITCH
- 6) It is recommended that the descaler level in the boiler be at the top of the boiler. This can be accomplished by controlling the flow with the ball valves.
- 7) Let the pump operate for 1 hour. Once the dissolve becomes neutral, the PH indicator will turn purple. The dissolve becomes ineffective.
Note: Liquid level in the descaler bucket should not drop below the pump. Add water if necessary.
- 8) After 1 hour, turn off the pump & close the inlet ball valve. Open the manual drain and then turn the main switch to off & let drain.
- 9) Flush the boiler with water once all of the descaler has been drained.
- 10) Close the manual blowdown drain valve (if so equipped).
- 11) Turn the unit on to fill with water.
 - a) Fill the 5-gallon bucket with water,
 - b) 2 cups of baking soda may be added to the waterWhen the water level reaches the middle of the sight glass, open the inlet valve & turn on the pump. Make sure that the outlet valve from the handhole plate is closed.
- 12) Let the water level rise above the top of the sight glass. After 10 minutes, open the manual drain valve (if so equipped) & turn the unit off.
Note: If the unit does not have a manual drain valve, then turn the main switch to off.
- 13) Continue flushing with water for 3 minutes. Once flushing is complete, the unit is descaled. Remove the descaling handhole plate and replace with the original where necessary.
- 14) Remove the pump assembly and install plugs where necessary.

GAS BOILER/ELECTRIC BOILER ORIGINAL VERSION (GAS SHOWN)

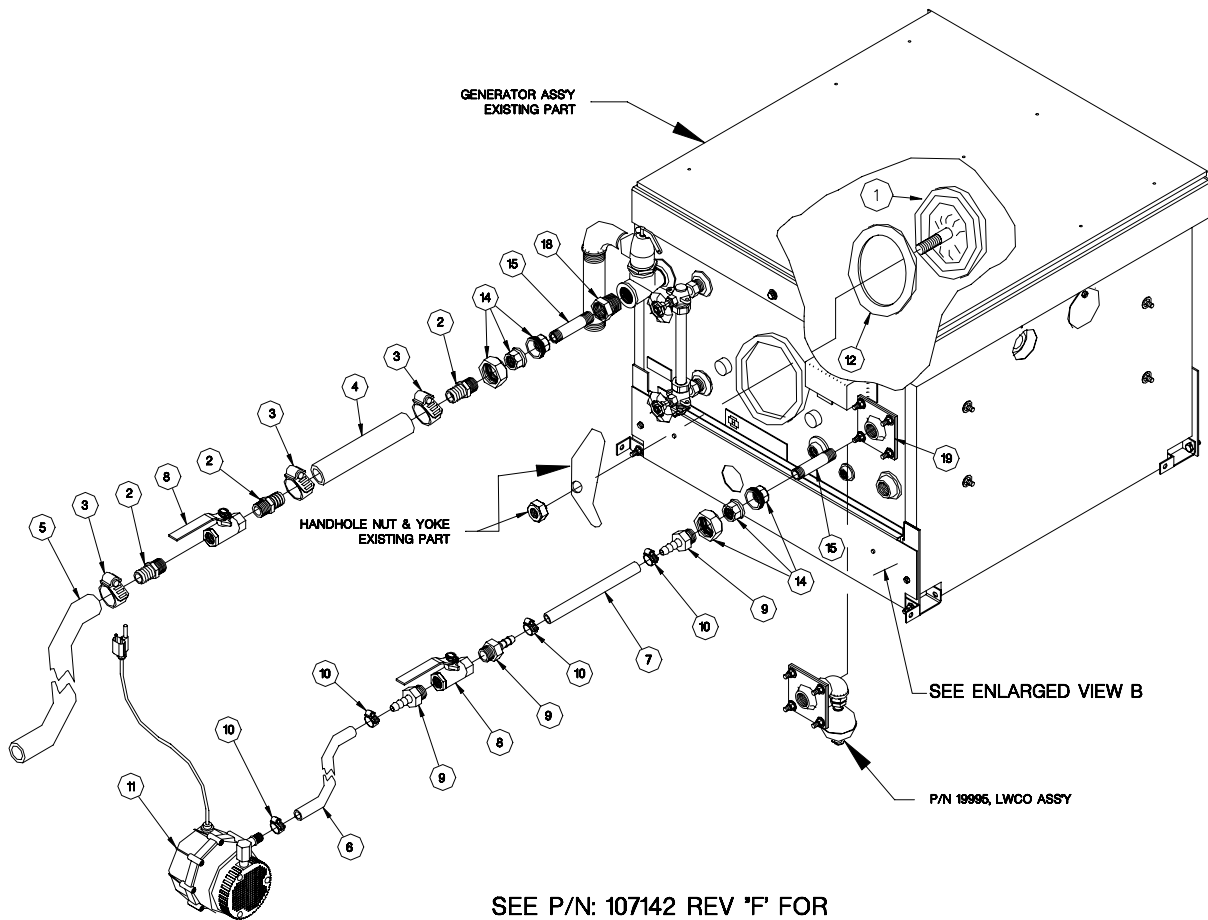
ENLARGED VIEW A
SHOWING KIT ASSEMBLED
TO FRONT OF GENERATOR



GAS BOILER/ELECTRIC BOILER FIELD REPLACEMENT VERSION (GAS SHOWN)

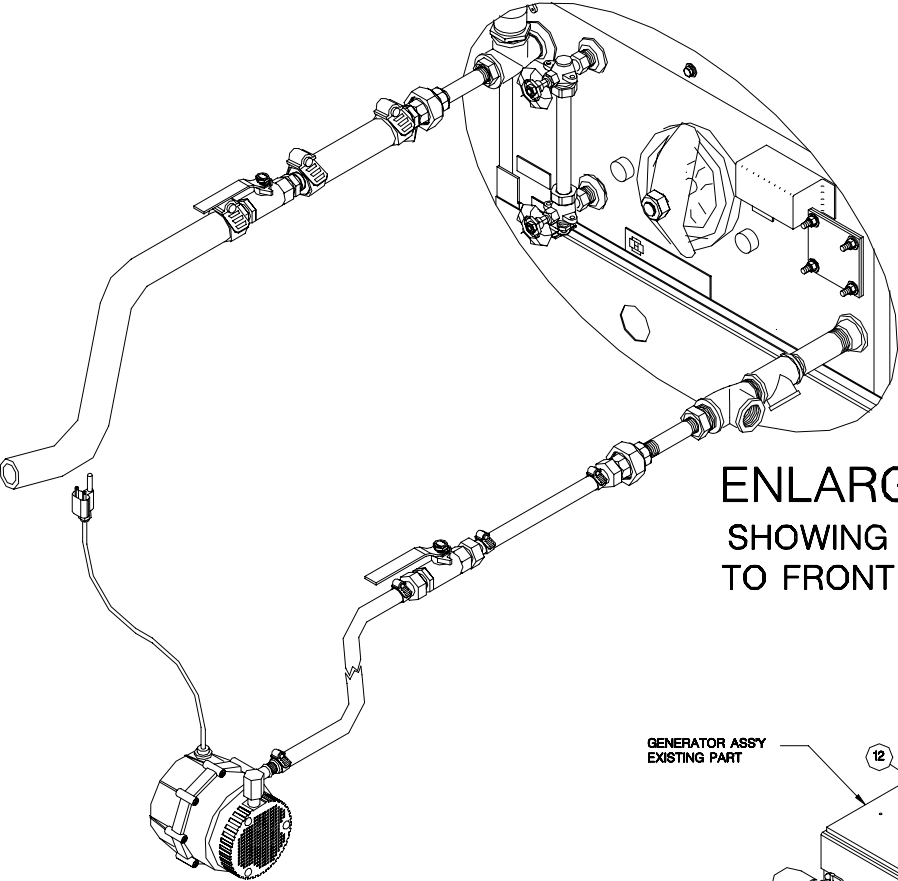


**ENLARGED VIEW C
SHOWING KIT ASSEMBLED
TO FRONT OF GENERATOR**

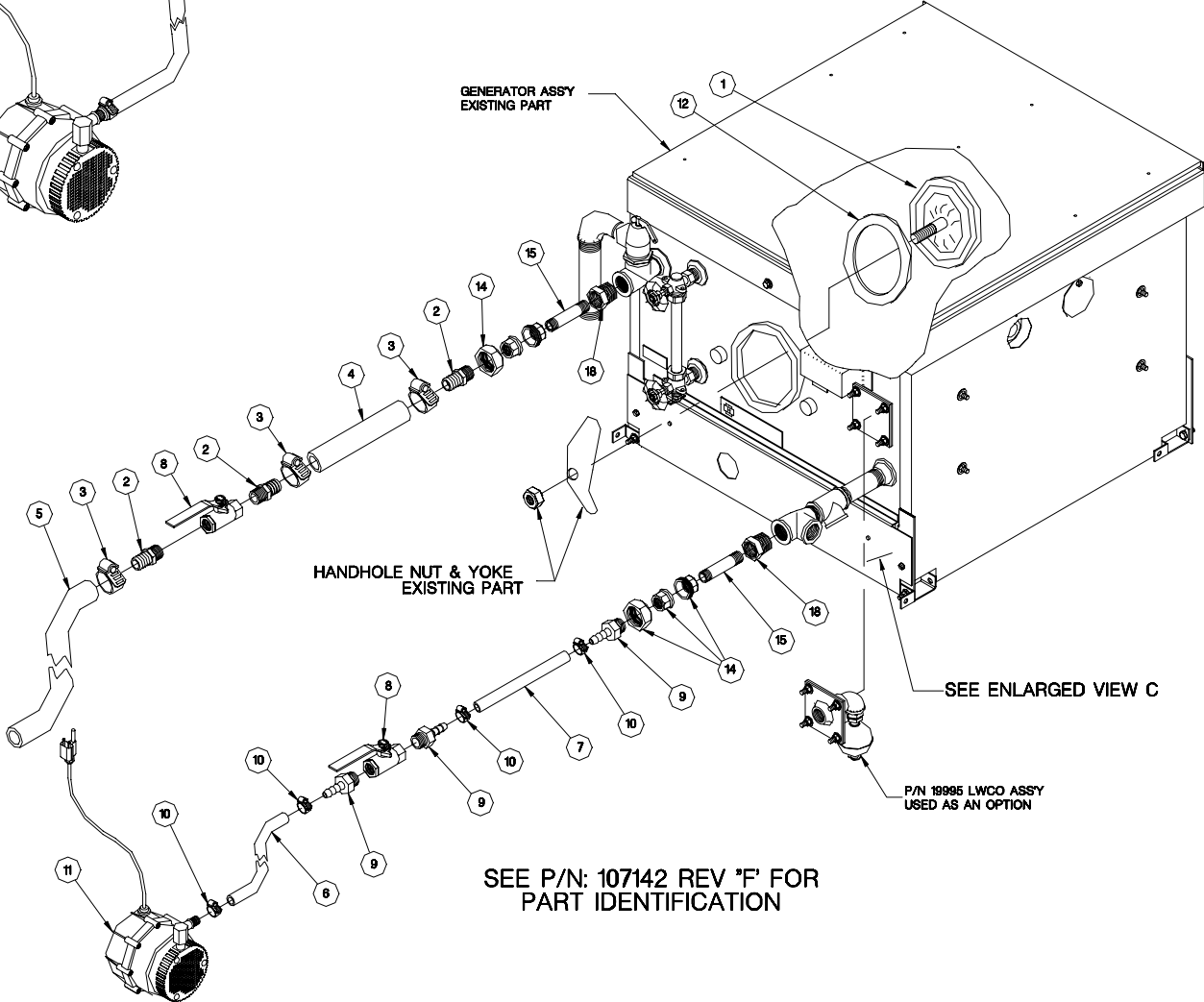


SEE P/N: 107142 REV 'F' FOR
PART IDENTIFICATION

GAS BOILER/ELECTRIC BOILER CURRENT PRODUCTION RELEASE (GAS SHOWN)



**ENLARGED VIEW C
SHOWING KIT ASSEMBLED
TO FRONT OF GENERATOR**



200/300KBTU DESCALING KIT PART LIST

(P/N: 107142)

ITEM	PART #	DESCRIPTION	QTY
1	437481	Plate Ass'y, Handhole w/Descaler Port	1
2	06241	Fitting, Hose Barb, 3/4 H x 1/2 MPT	3
3	03204	Clamp, Hose, Worm Drive	3
4	1088190600	3/4 Hose For Descaling Syst, 6.000" Lg	1
5	1088193600	3/4 Hose For Descaling Syst, 36.000" Lg	1
6	1088203600	1/2 Hose For Descaling Syst, 36.000" Lg	1
7	1088200600	1/2 Hose For Descaling Syst, 6.000" Lg	1
8	22212	Valve, Ball, 1/2 Female	2
9	06237	Fitting, Hose, Barb, 1/2H X 1/2 MPT	3
10	106219	Clamp, Hose Worm Drive	4
11	107131	Pump, Submersible, Boiler Descaler Kit	1
12	07106	Gasket, Handhole	1
13	107199	Bucket W/Lid, 5 Gallon	1
14	23103	Union, 0.500, Brass	2
15	14331	Nipple, 0.500 NPT x 2.500 Lg, Sch 40	2
16	108815	Label, Descaling System	1
17	108845	Envelope, Vinyl, 10" x 13", Short Side Opening	1
18	02566	Bushing, Reducing, 3/4 x 1/2	2
19	41943	Plate Ass'y, Mounting, Weldment	1
20	260 ALK	Instructions, Descaling Installation	1
21	260 ALP	Instructions, Piping Conversion	1